

*KisCutter*



**OPERATOR'S MANUAL  
MAINTENANCE MANUAL  
PARTS LIST**

**TURFCO<sup>®</sup>**  
*KisCutter*

**Sod Cutter**

**Product Number 85530**

**Patent Pending**

**Starting Serial Number N01101**

Manual Number 662430 Rev C



**DANGER - IF INCORRECTLY USED THIS MACHINE CAN CAUSE SEVERE INJURY. THOSE WHO USE AND MAINTAIN THIS MACHINE SHOULD BE TRAINED IN ITS PROPER USE, WARNED OF ITS DANGERS, AND SHOULD READ THE ENTIRE MANUAL BEFORE ATTEMPTING TO SET-UP, OPERATE OR SERVICE THE MACHINE.**

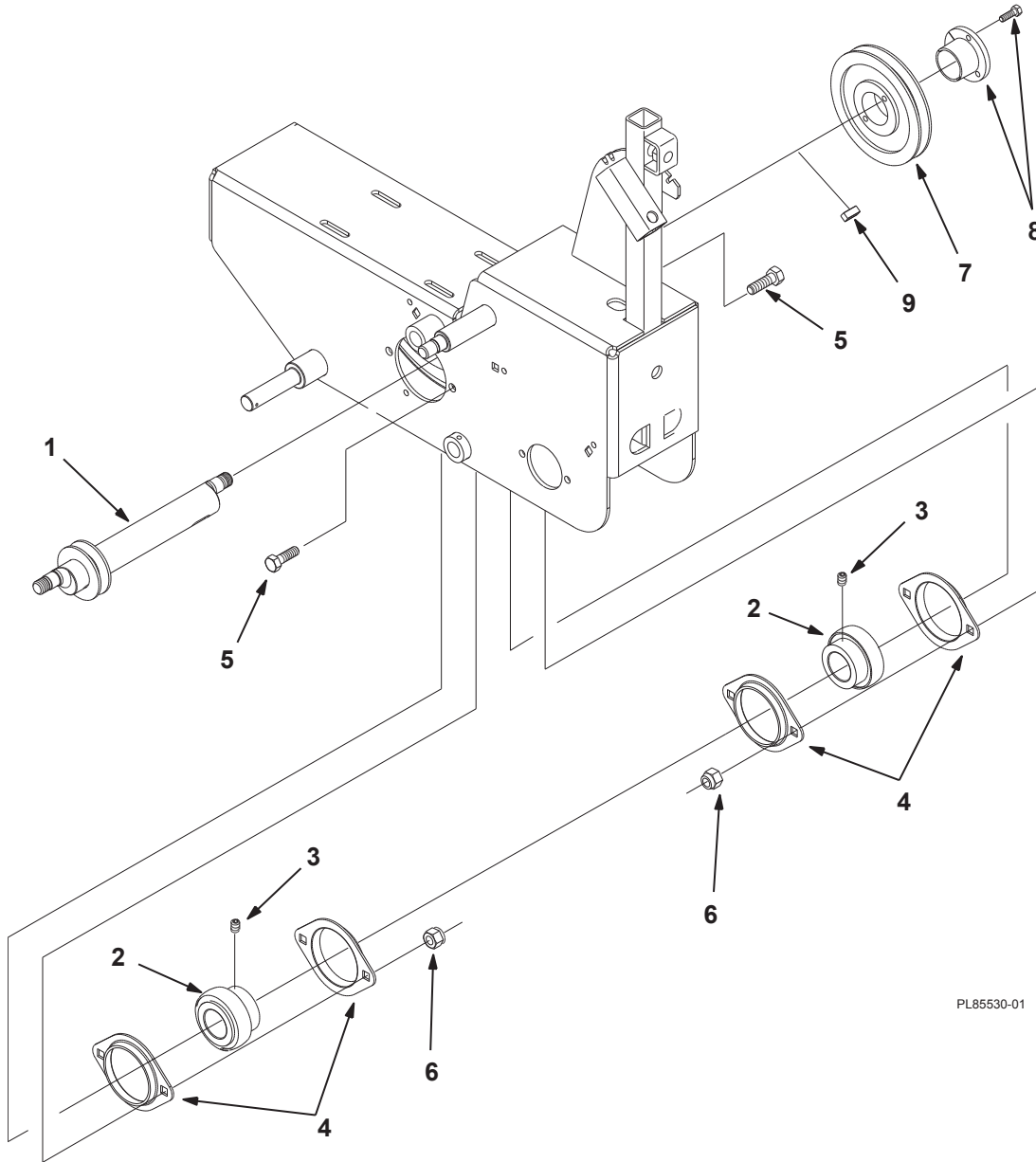
**TURFCO MFG. INC.**

1655 101st. Avenue NE • Minneapolis, MN 55449-4420 USA

Phone (763) 785-1000 • FAX (763) 785-0556

**2010 Turfco Mfg., Inc.**

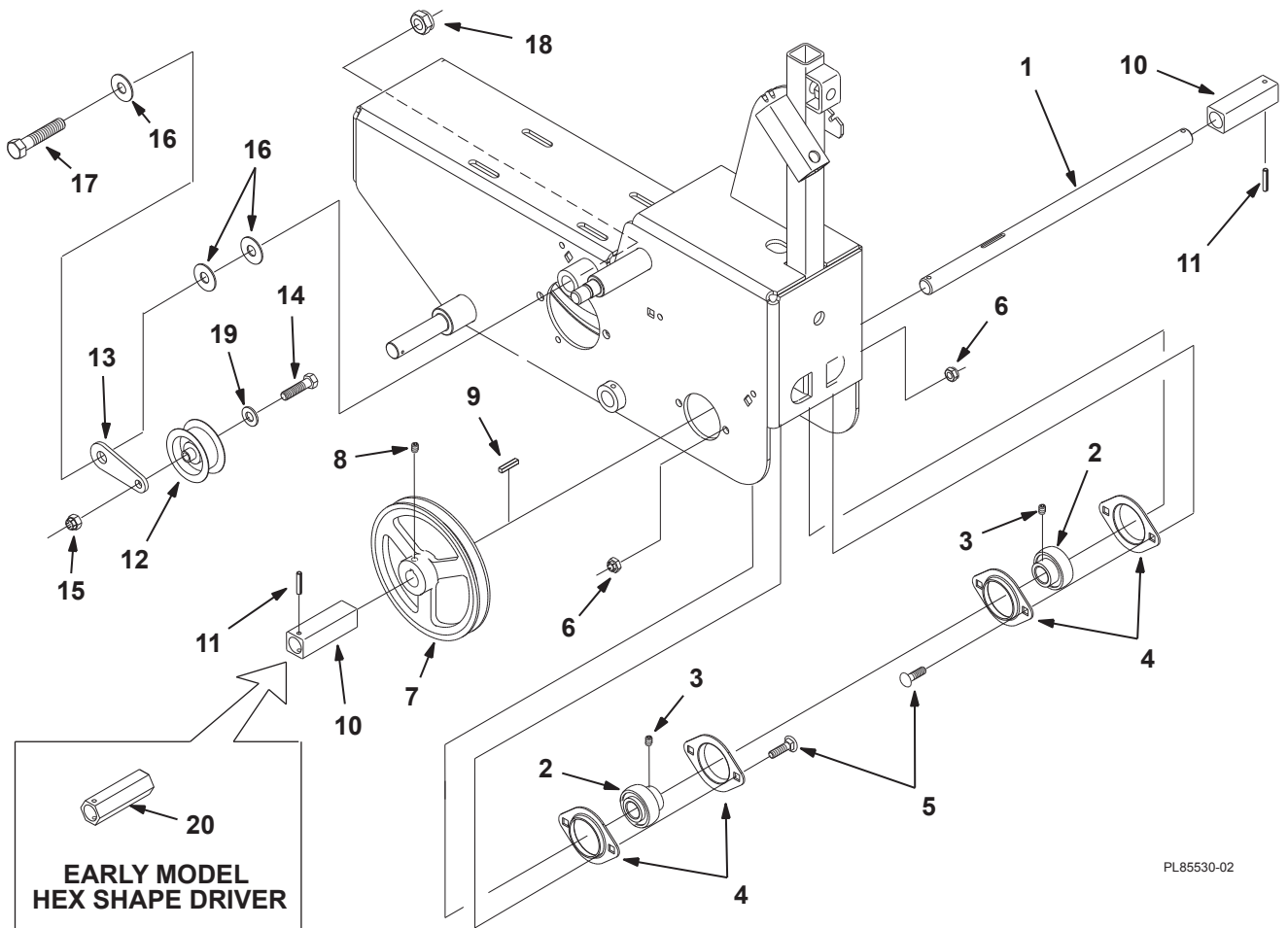
**Eccentric Shaft**



PL85530-01

Item No.	Part No.	Description	Qty.
1	662272	Shaft, Eccentric.....	1
2	662296	Bearing, Includes Set Screws.....	2
3	415561	Screw, Set, 5/16"-24 x 5/16".....	4
4	662299	Flangette, Bearing Retainer.....	4
5	400262	Screw, Hex Head, 3/8"-16 x 1".....	4
6	444810	Nut, Hex, 3/8"-16 Flexloc Full.....	4
7	662302	Sheave (Pulley), 5".....	1
8	662301	Bushing, Includes Locking Screws.....	1
9	662454	Key, 5/16" x 3/16" x 1-1/4" Long.....	1

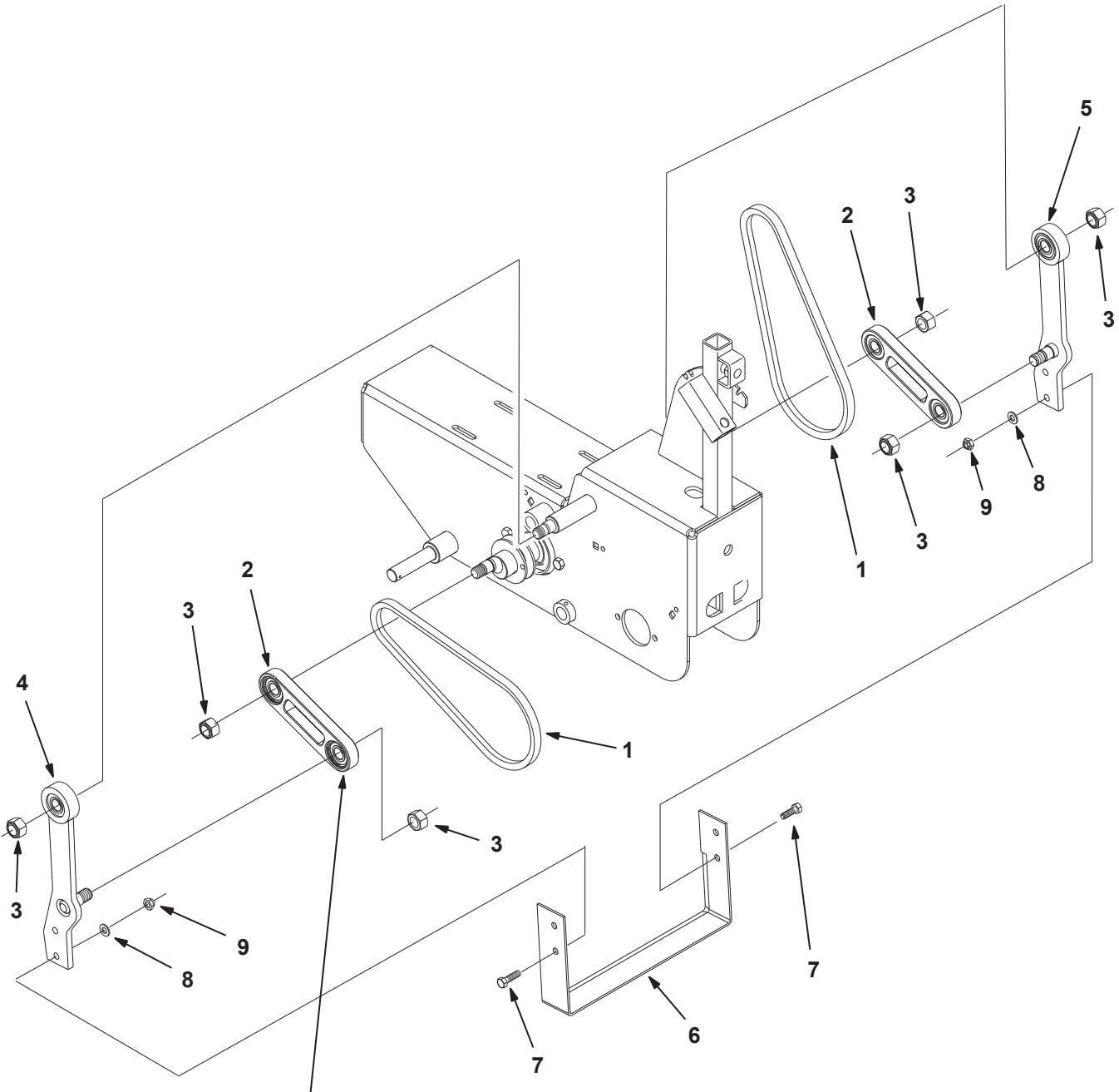
Wheel Drive and V-Belt Tensioner



PL85530-02

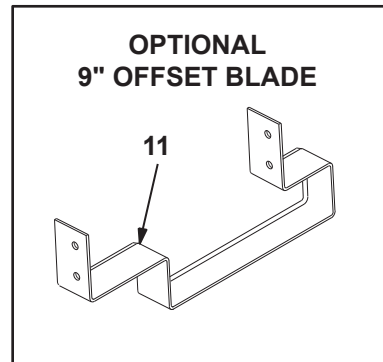
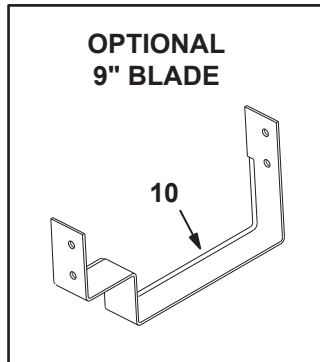
Item No.	Part No.	Description	Qty.
1	662281	Shaft, Drive Axle, Wheel .....	1
2	662295	Bearing, Includes Set Screws .....	2
3	499051	Screw, Set, 1/4"-28 x 1/4" .....	4
4	661179	Flangette, Bearing Retainer (Set of 2) .....	4
5	658240	Bolt, Carriage, 5/16"-18 x 3/4" .....	4
6	658600	Nut, Hex, 5/16"-18 Nylock .....	4
7	662303	Sheave (V-Belt Pulley), Includes Set Screws .....	1
8	415517	Set Screw, 5/16"-18 x 1/4" .....	2
9	499086	Key, 3/16" x 1" .....	1
10	662282	Driver, Square Shape .....	2
11	662453	Pin, Spring. 3/16" x 1" .....	2
12	658399	Pulley, Idler .....	1
13	662264	Plate, Idler Arm .....	1
14	400268	Screw, Hex Head, 3/8"-16 x 1-3/4" .....	1
15	444810	Nut, Hex, 3/8"-16, Flexloc Full .....	1
16	452010	Washer, Flat, 1/2" ID x 1-1/4" OD x 5/64" Thick .....	3
17	400450	Screw, Hex Head, 1/2"-20 x 2-1/2" .....	1
18	444816	Nut, Hex, 1/2"-20 Flexloc .....	1
19	499021	Washer, Flat, 25/64" ID x 5/8" OD x 1/16" Thick .....	1
20	662727	Driver, Hex Shape (Early Models Only) .....	2

Pitman Arms, Cutting Arms, V-Belt and Blade



**INSTALL WITH RETAINING RINGS TOWARDS OUTSIDE (BOTH RIGHT AND LEFT HAND PITMAN ARMS)**

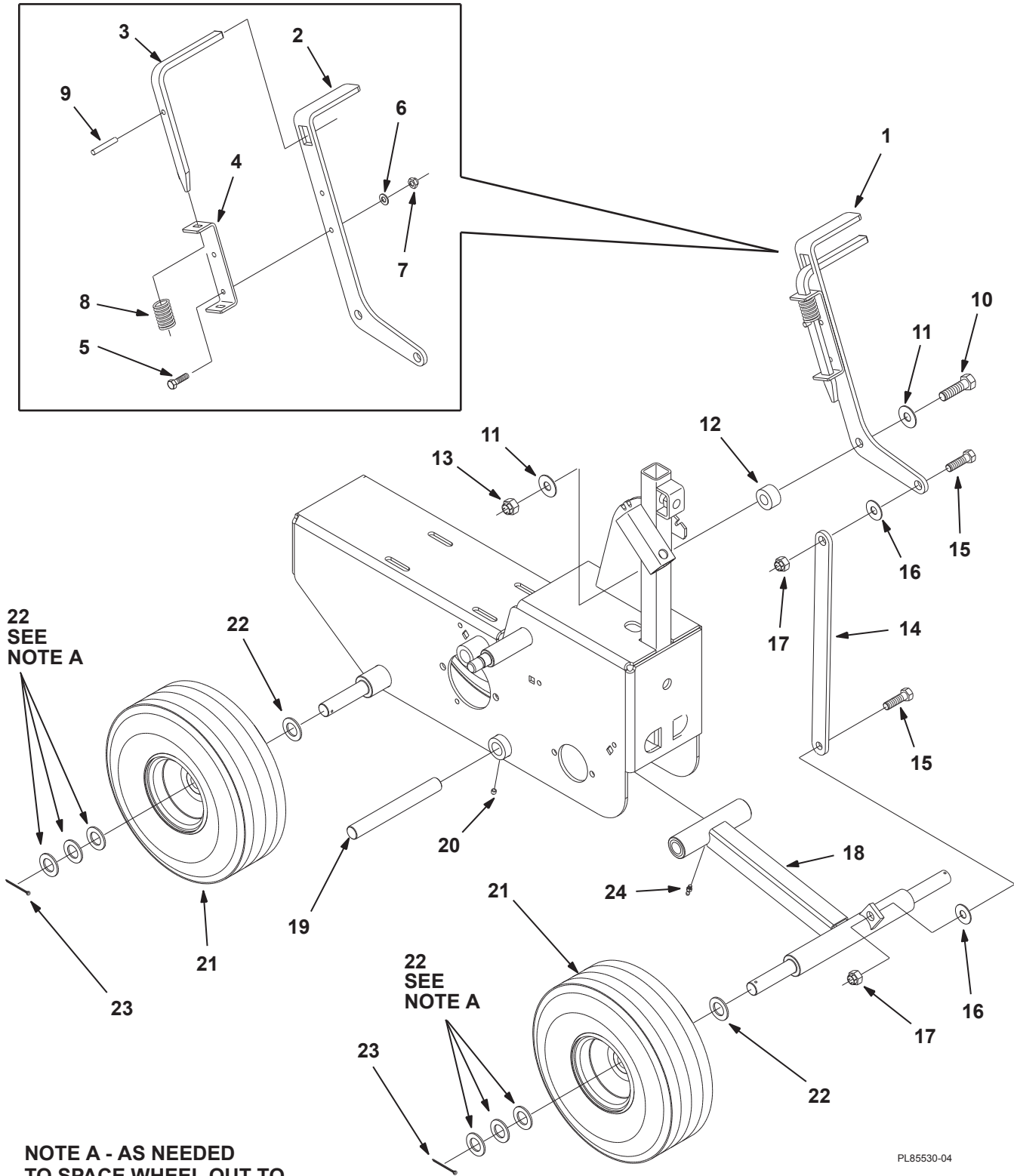
PL85530-03REV C



**Pitman Arms, Cutting Arms, V-Belt and Blade**

<b>Item No.</b>	<b>Part No.</b>	<b>Description</b>	<b>Qty.</b>
1	662300	V-Belt .....	2
2	662484	Pitman Arm Assembly, Right or Left Hand (Includes Arm, Bearings and Retaining Rings) .....	2
3	660858	Nut, Hex, 5/8"-11 Nylock .....	6
4	662533	Pivot Arm Assembly, Left Hand (Includes Arm, Bearing and Retaining Ring).....	1
5	662485	Pivot Arm Assembly, Right Hand (Includes Arm, Bearing and Retaining Ring).....	1
6	87279	Blade, Cutting .....	1
7	400264	Screw, Hex Head, 3/8"-16 x 1-1/4" .....	4
8	452006	Washer, Flat, 3/8" ID x 7/8" OD x 5/64" Thick .....	4
9	444810	Nut, Hex, 3/8"-16 Flexloc Full .....	4
10	87396	Blade, 9" Inch Cut .....	1
11	87398	Blade, 9" Inch Offset .....	1

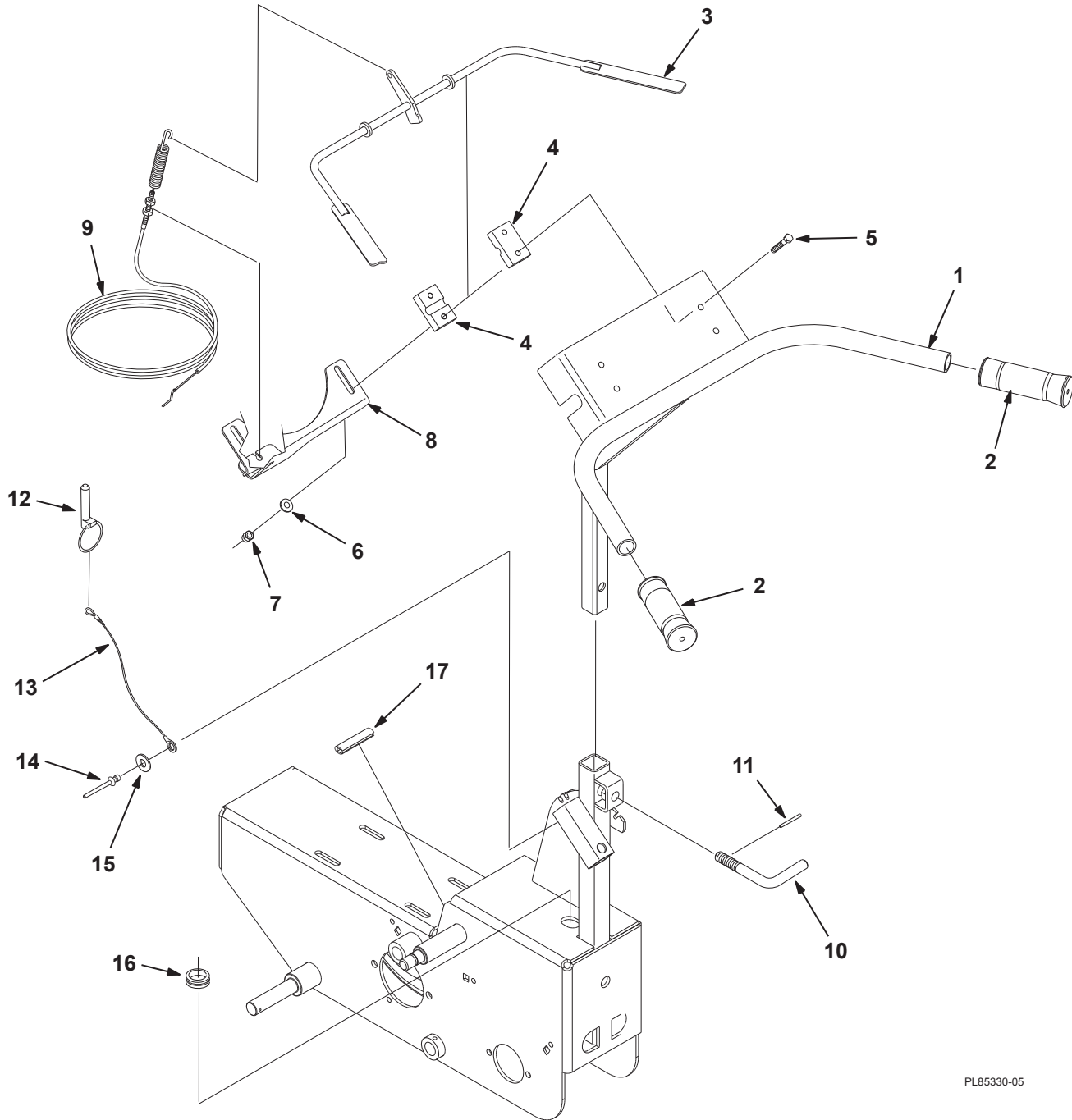
Depth Adjuster and Wheels



**Depth Adjuster and Wheels**

Item No.	Part No.	Description	Qty.
1	662312	Assembly, Depth Adjuster, Includes Items 2 thru 9.....	1
2	662316	Lever, Depth Adjuster.....	1
3	662314	Trigger, Depth Adjuster.....	1
4	662313	Bracket, Trigger Slide.....	1
5	400108	Screw, Hex Head, 1/4"-20 x 3/4".....	2
6	452002	Washer, Flat, 1/4" ID x 9/16" OD x 3/64" Thick.....	2
7	444830	Nut, Hex, 1/4-20 Flexloc.....	2
8	651381	Spring, Trigger.....	1
9	461359	Pin, Spring, 1/8" x 3/4".....	1
10	400446	Screw, Hex Head, 1/2"-20 x 2".....	1
11	452010	Washer, Flat, 1/2" ID x 1-1/4" OD x 5/64" Thick.....	2
12	662315	Bushing, Depth Adjuster.....	1
13	444816	Nut, Hex, 1/2"-20, Flexloc.....	1
14	662343	Bar, Depth Adjuster.....	1
15	400264	Screw, Hex Head, 3/8"-16 x 1-1/4".....	2
16	452006	Washer, Flat, 3/8" x 7/8" x 5/64" Thick.....	2
17	444810	Nut, Hex, 3/8"-16 Flexloc Full.....	2
18	662275	Axle Pivot Weldment, Includes Oilite Bearings and Grease Fitting.....	1
19	662279	Shaft, Pivot, Depth Adjuster.....	1
20	415509	Screw, Set, 1/4"-20 x 1/4".....	2
21	661300	Wheel and Tire Assembly, 410/350-4 x 10".....	4
22	660836	Washer, Flat, 49/64" ID x 1-5/16" OD x 3/32", <b>SEE NOTE A</b> .....	16
23	460028	Pin, Cotter, 1/8" x 1".....	4
24	471214	Fitting, Grease, 1/4"-28 Straight.....	1

Handlebar and Throttle Control



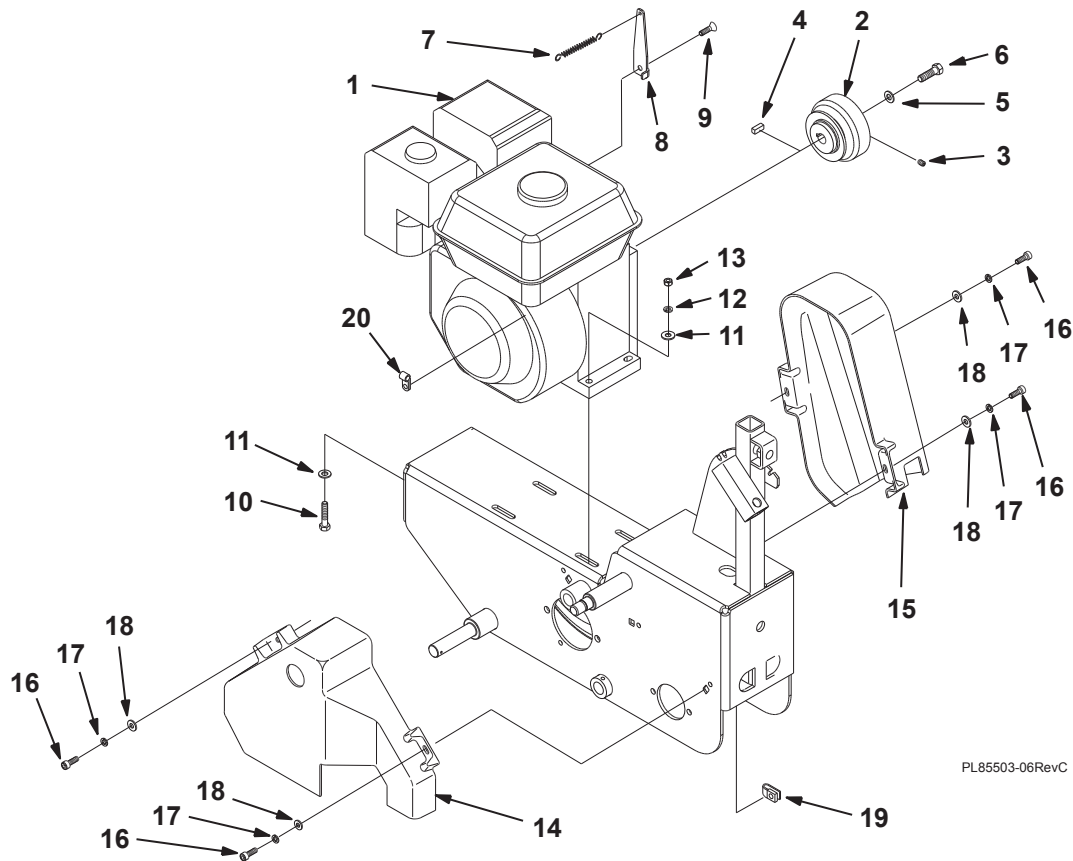
PL85330-05



**Handlebar and Throttle Control**

<b>Item No.</b>	<b>Part No.</b>	<b>Description</b>	<b>Qty.</b>
1	662418	Handlebar, KisCutter.....	1
2	659274	Grip, Handlebar.....	2
3	662423	Throttle Control.....	1
4	659294	Block, Bearing, Polyethylene.....	4
5	400118	Screw, Hex Head, 1/4"-20 x 1-3/4".....	4
6	452002	Washer, Flat, 1/4" ID x 9/16" OD x 3/64" Thick.....	5
7	444830	Nut, Hex, 1/4"-20 Flexloc.....	4
8	664205	Plate, Throttle Cable Extension.....	1
9	664206	Cable, Throttle, Jacketed (Includes Wire, Nuts and Spring).....	1
10	662345	Lock, Handlebar.....	1
11	461359	Pin, Spring, 1/8" x 3/4".....	1
12	658297	Pin, Lynch, 7/16".....	1
13	658327	Lanyard.....	1
14	657218	Rivet, Blind, 1/4".....	1
15	452004	Washer, Flat, 5/16" ID x 3/4" OD x 1/16" Thick.....	1
16	658049	Grommet, Rubber, 9/16".....	1
17	663969	Trim, Edge, Rubber.....	1

**Engine and Guards**



PL85503-06RevC

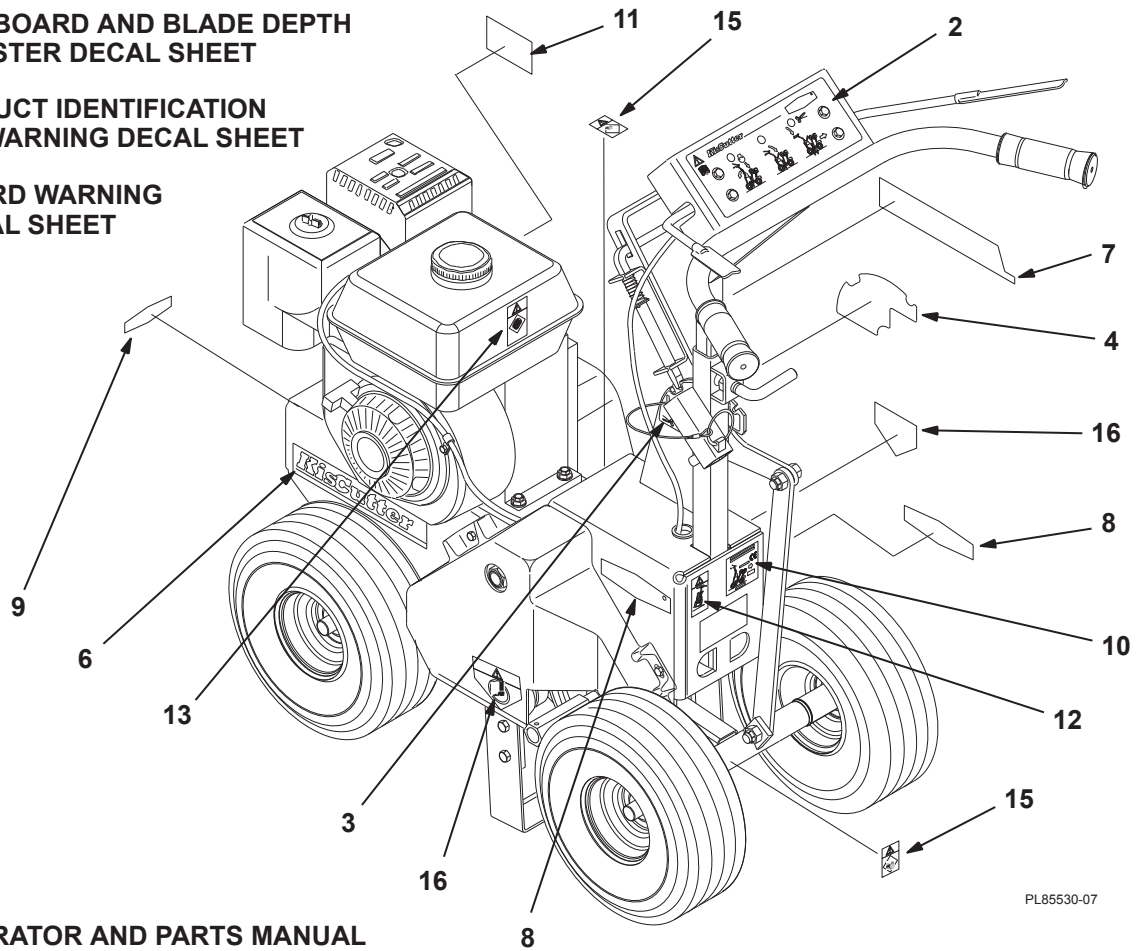
Item No.	Part No.	Description	Qty.
1	656943	Engine, Honda GX-160-K1QX, 5.5 HP .....	1
2	662304	Clutch, Centrifugal .....	1
3	499048	Screw, Set, 1/4"-28 x 5/16" .....	1
4	499209	Key, Square, 3/16" x 1-1/2" .....	1
5	499427	Washer, Flat, 21/64" ID x 7/8" OD x 3/32" Thick .....	1
6	400222	Screw, Hex Head, 5/16"-24 x 3/4" .....	1
7	662429	Spring, Extension (Throttle Cable).....	1
8	662701	Bracket, Throttle Spring .....	1
9	662702	Screw, Flt Cap Head, 5/16"-24 x 3/4" .....	1
10	400194	Screw, Hex Head, 5/16"-18 x 1-3/4" .....	4
11	452004	Washer, Flat, 5/16" ID x 3/4" OD x 1/16" Thick .....	8
12	446134	Washer, Lock, 5/16" .....	4
13	443106	Nut, Hex, 5/16"-18.....	4
14	662703	Guard, Plastic, Left Hand.....	1
15	662704	Guard, Plastic, Right Hand .....	1
16	657123	Screw, Socket Head, 1/4"-20 x 1" .....	4
17	446128	Washer, Lock, 1/4" .....	4
18	452002	Washer, Flat, 1/4" ID x 9/16" OD x 3/64" Thick .....	4
19	662620	Nut, U-Type, 1/4"-20 Multi-Thread .....	4
20	650185	Clip, Throttle Cable .....	1

**Decals and Manual**

**1 - DASHBOARD AND BLADE DEPTH ADJUSTER DECAL SHEET**

**5 - PRODUCT IDENTIFICATION AND WARNING DECAL SHEET**

**14 - GUARD WARNING DECAL SHEET**



**17 - OPERATOR AND PARTS MANUAL**

PL85530-07

Item No.	Part No.	Description	Qty.
1	662322	Decal Sheet, Dashboard and Depth Adjuster, Includes Items 2, 3 and 4 .....	1
2		Decal, Dashboard .....	1
3		Decal, Blade Depth Adjuster, Left Hand .....	1
4		Decal, Blade Depth Adjuster, Right Hand .....	1
5	662323	Decal Set, KisCutter, Includes Items 6 Thru 13 .....	1
6		Decal, KisCutter Logo, Left Hand .....	1
7		Decal, KisCutter Logo, Right Hand .....	1
8		Decal, Turfco Logo, 4-1/2" .....	2
9		Decal, Turfco Logo, 3-1/2" .....	1
10		Decal, Product Identification .....	1
11		Decal, Warning, Fuel Level .....	1
12		Decal, Maximum Angle of Operation Warning .....	1
13		Decal, Ear Protection Warning .....	1
14	662749	Decal Sheet, Guard Warnings, Includes Items 15 and 16 .....	1
15		Decal, Warning, Hand Hazard .....	2
16		Decal, Warning, Foot Hazard .....	2
17	662430	Manual, KisCutter, Operator and Parts, Rev C .....	1



***TURFCO MFG. INC.***

**1655 101<sup>st</sup> Avenue NE • Minneapolis, MN 55449-4420 USA**

**Phone (763) 785-1000 • FAX (763) 785-0556**

---

**Internet - [www.turfc.com](http://www.turfc.com) • E-Mail - [service@turfc.com](mailto:service@turfc.com)**